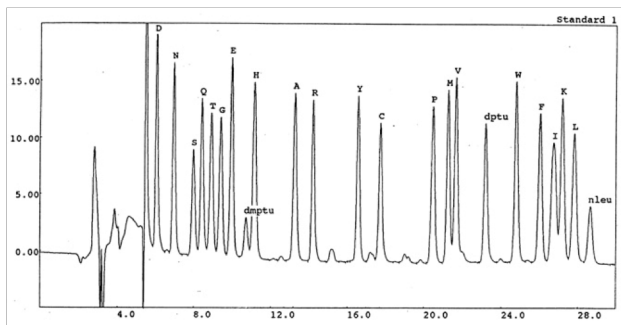


## HAISIL PTH Protein Sequencing Columns



PTH Standards on HAISIL PTH Column P/N: HS-2221-PTH5  
 Note: Chromatogram Courtesy of Al Smith, Stanford PAN Facility, (1996)

### Application

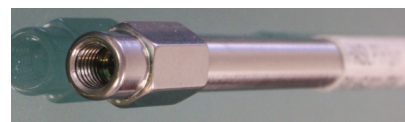
In 1985, protein sequencing by Edman degradation was revolutionized by Applied Biosystems when it introduced the Model 470 Protein Sequencer. This powerful, highly automated instrument evolved over the following 20 years into its most recent version - the PROCISE® Protein Sequencing System.

Today, over 30 years later, this unique platform continues to be a workhorse for many protein chemists worldwide.

Higgins Analytical offers a broad range of high quality, reasonably priced PTH Columns, Cartridges, and related consumables, for both HT and cLC sequencing on these classical instruments.

### Guide to HAISIL PTH Column and Cartridge Part Numbers

Part Number	Description	Price
HS-2221-PTH5	HAISIL PTH Column 220 x 2.1mm <i>This is the same conventional format, heater block compatible, HPLC column that Higgins Analytical has been manufacturing since 1996</i>	\$750
HF-2221-PTH5	HAISIL PTH Cartridge Column 220 x 2.1mm <i>This high efficiency cartridge requires two HAIPEEK Cartridge Holder End Caps, and is compatible with the Procise® Cartridge Heater Block</i>	\$700
HF-0203-PTH5	HAISIL PTH Cartridge Column 220 x 2.1mm <i>Compatible with the original ABI Cartridge Holder</i>	\$750
HS-25M8-PTH5	HAISIL PTH Column 250 x 0.8mm <i>Compatible with the Standard Procise® Cartridge Heater Block</i>	\$775
HF-0232-PTH5	HAISIL PTH GUARD 20 x 3.2mm (Pkg of 5) <i>These Cartridges are for the Static Mixer on the Pump</i>	\$175
PEEK-CAPS	HAIPEEK Cartridge Holder End Caps (Pkg of 2) <i>Convert Standard Cartridge Holder for HF-2221-PTH5 This modification of the Holder makes it compatible with both HF-2221-PTH5 and HF-0203-PTH5 cartridges</i>	\$100



### Some of the Custom Columns We Manufacture for Special Applications

Part Number	Description	Price
HS-2521-PTH5	HAISIL PTH Column 250 x 2.1mm <i>A longer 250 x 2.1mm column that still fits in heater</i>	\$750
HC-25MI-PTH5	HAISIL PTH Column 250 x 0.1mm <i>Capillary Column for LC-MS Detection</i>	\$630

